

Region XVII JH/MS Audition Scales

Flute

Bb Concert

Musical notation for the Bb Concert scale, starting on Bb and ascending to G5. The scale is written in treble clef with a key signature of two flats (Bb, Eb) and a common time signature. It consists of quarter notes and eighth notes, with a final whole note G5.

Eb Concert

Musical notation for the Eb Concert scale, starting on Eb and ascending to G5. The scale is written in treble clef with a key signature of three flats (Bb, Eb, Ab) and a common time signature. It consists of quarter notes and eighth notes, with a final whole note G5.

Ab Concert

Musical notation for the Ab Concert scale, starting on Ab and ascending to G5. The scale is written in treble clef with a key signature of four flats (Bb, Eb, Ab, Db) and a common time signature. It consists of quarter notes and eighth notes, with a final whole note G5.

Db Concert

Musical notation for the Db Concert scale, starting on Db and ascending to G5. The scale is written in treble clef with a key signature of five flats (Bb, Eb, Ab, Db, Gb) and a common time signature. It consists of quarter notes and eighth notes, with a final whole note G5.

F Concert

Musical notation for the F Concert scale, starting on F and ascending to G5. The scale is written in treble clef with a key signature of one flat (Bb) and a common time signature. It consists of quarter notes and eighth notes, with a final whole note G5.

C Concert

Musical notation for the C Concert scale, starting on C and ascending to G5. The scale is written in treble clef with a common time signature. It consists of quarter notes and eighth notes, with a final whole note G5.

G Concert

Musical notation for the G Concert scale, starting on G and ascending to G5. The scale is written in treble clef with a key signature of one sharp (F#) and a common time signature. It consists of quarter notes and eighth notes, with a final whole note G5.

Chromatic Scale

Musical notation for the Chromatic Scale, consisting of two staves. The top staff starts on G4 and ascends chromatically to G5, with a triplet of three notes marked above. The bottom staff starts on G4 and descends chromatically to G3, with a triplet of three notes marked above. The scale is written in treble clef with a common time signature.

Region XVII JH/MS Audition Scales

Oboe

Bb Concert



Eb Concert



Ab Concert



Db Concert



F Concert



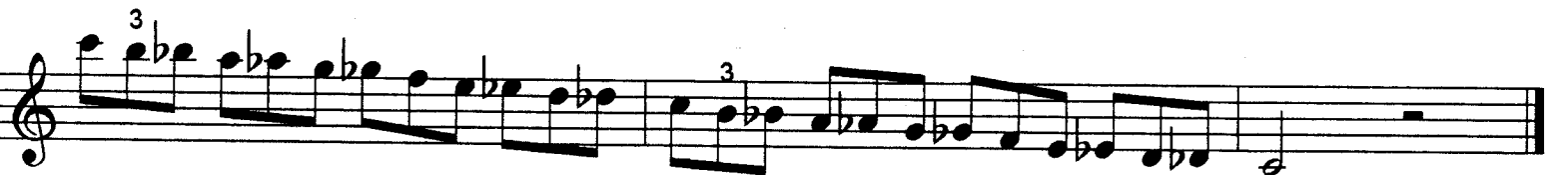
C Concert



G Concert



Chromatic Scale



Region XVII JH/MS Audition Scales

Bassoon

Bb Concert



Eb Concert



Ab Concert



Db Concert



F Concert



C Concert



G Concert



Chromatic Scale

