

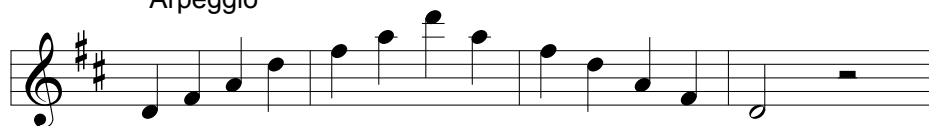
# Bari Sax Key and Technique Studies

## Concert F-Your D

Major Scale



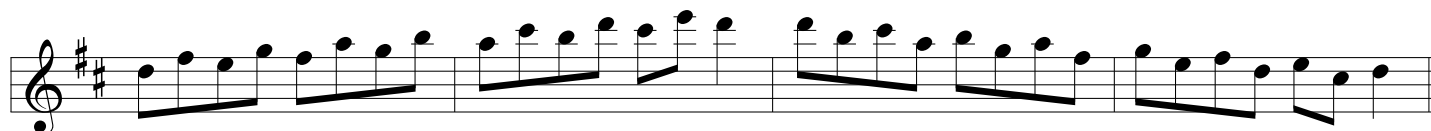
Arpeggio



Thirds--Lower



Thirds--Upper



Clarke--Lower



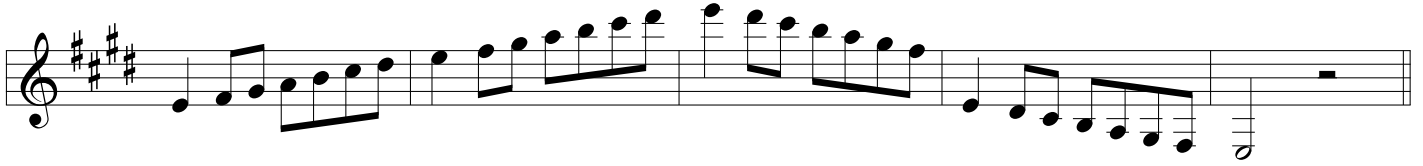
Clarke--Upper



# Bari Sax Key and Technique Studies

## Concert G-Your E

Major Scale



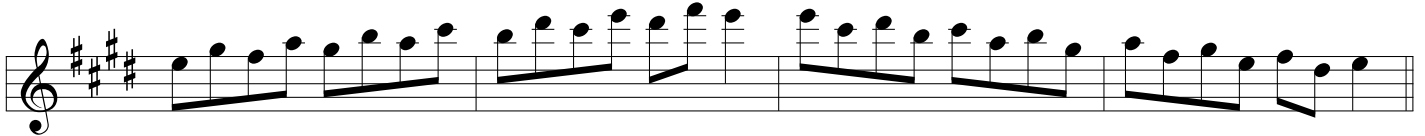
Arpeggio



Thirds--Lower



Thirds--Upper



Clarke--Lower



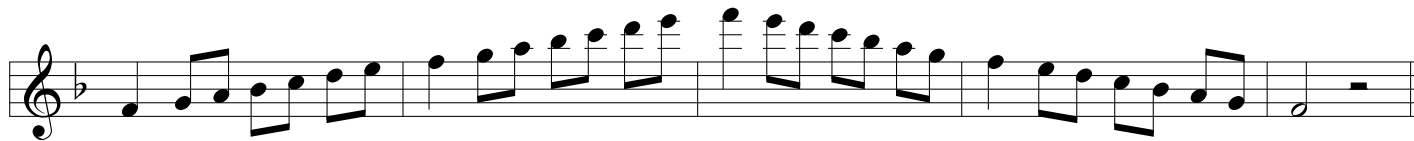
Clarke--Upper



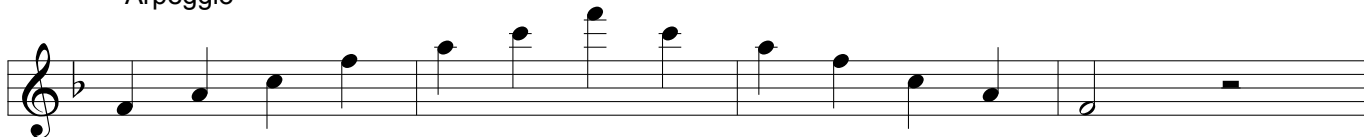
# Bari Sax Key and Technique Studies

## Concert Ab-Your F

Major Scale



Arpeggio



Thirds--Lower



Thirds--Upper



Clarke--Lower



Clarke--Upper



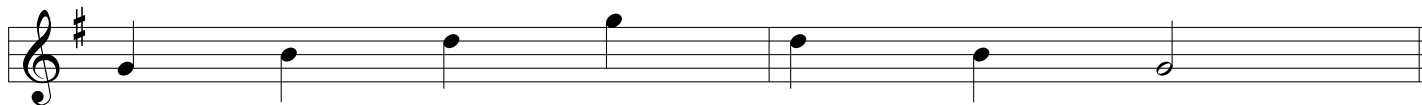
# Bari Sax Key and Technique Studies

## Concert Bb-Your G

Major Scale



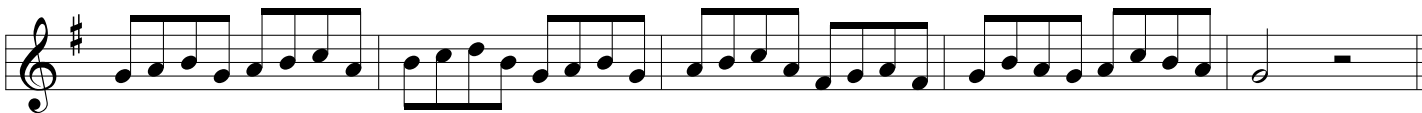
Arpeggio



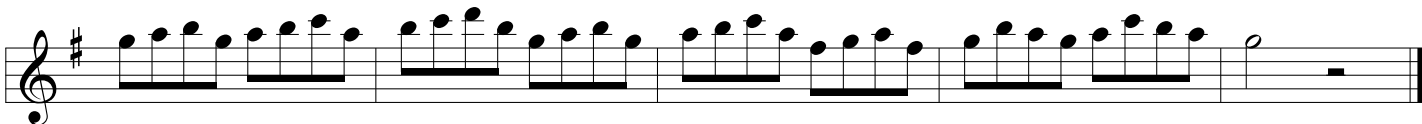
Thirds



Clarke--Lower



Clarke--Upper



# Bari Sax Key and Technique Studies

## Concert C-Your A

Major Scale

A musical staff in treble clef with a key signature of three sharps (F#, C#, G#). The scale is written in eighth notes, ascending and then descending, ending with a whole note on the final note.

Arpeggio

A musical staff in treble clef with a key signature of three sharps (F#, C#, G#). The arpeggio is written in eighth notes, ascending and then descending, ending with a whole note on the final note.

Thirds--Lower

A musical staff in treble clef with a key signature of three sharps (F#, C#, G#). The exercise consists of eighth notes forming a descending sequence of thirds, starting from the second line of the staff.

Thirds--Upper

A musical staff in treble clef with a key signature of three sharps (F#, C#, G#). The exercise consists of eighth notes forming an ascending sequence of thirds, starting from the first line of the staff.

Clarke--Lower

A musical staff in treble clef with a key signature of three sharps (F#, C#, G#). The exercise consists of eighth notes forming a descending sequence of sixteenth-note pairs, starting from the second line of the staff.

Clarke--Upper

A musical staff in treble clef with a key signature of three sharps (F#, C#, G#). The exercise consists of eighth notes forming an ascending sequence of sixteenth-note pairs, starting from the first line of the staff.



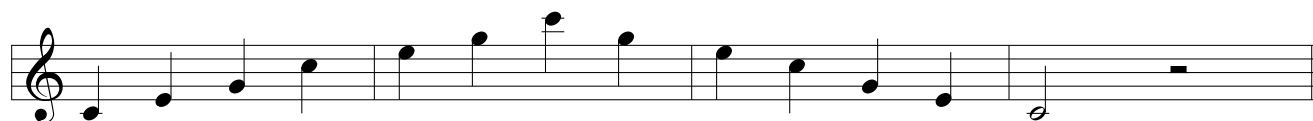
# Bari Sax Key and Technique Studies

## Concert Eb-Your C

### Major Scale



### Arpeggio



### Thirds--Lower



### Thirds--Upper



### Clarke--Lower



### Clarke--Upper





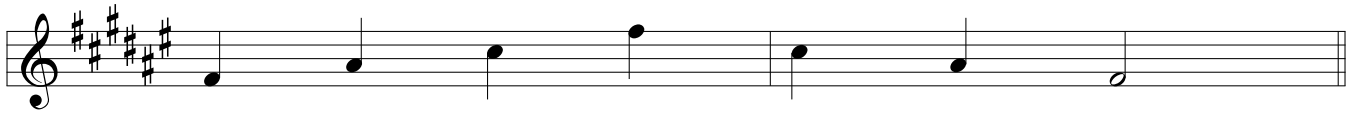
# Bari Sax Key and Technique Studies

Major Scale

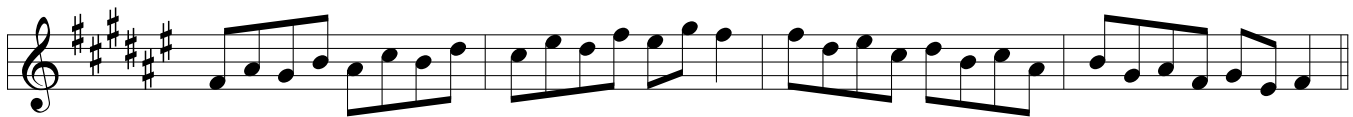
## Concert A-Your F#



Arpeggio



Thirds



Clarke--Lower



Clarke--Upper

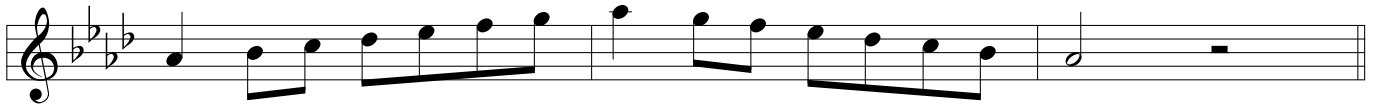




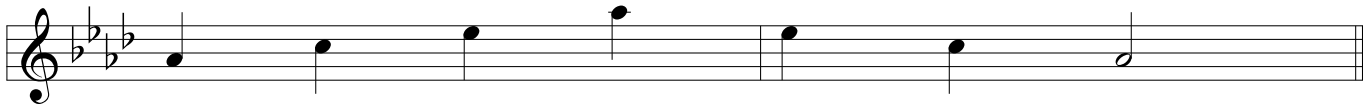
# Bari Sax Key and Technique Studies

## Concert Cb-Your Ab

Major Scale



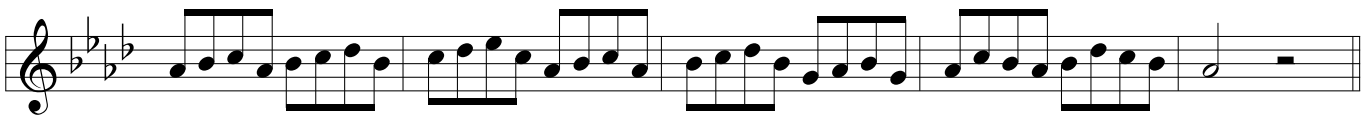
Arpeggio



Thirds



Clarke--Lower



Clarke--Upper



# Bari Sax Key and Technique Studies

## Concert Gb-Your Eb

Major Scale

