

# Bassoon Key and Technique Studies

## Concert C

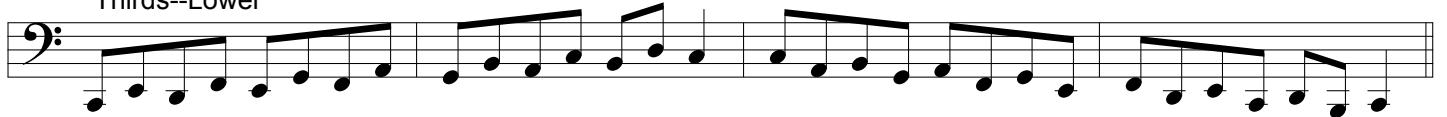
Major Scale



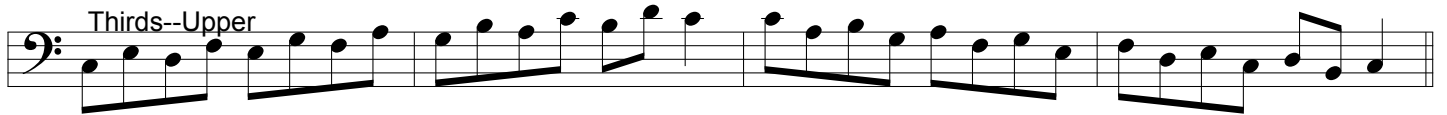
Arpeggio



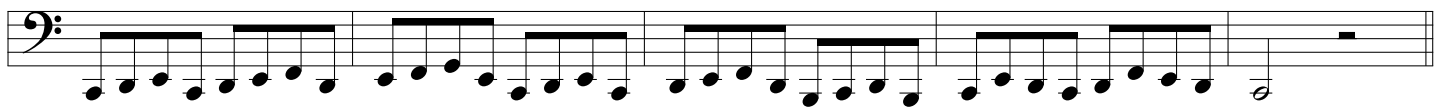
Thirds--Lower



Thirds--Upper



Clarke--Lower



Clarke--Upper



# Bassoon Key and Technique Studies

## Concert D

Major Scale



Arpeggio



Thirds--Lower



Thirds--Upper



Clarke--Lower



Clarke--Upper



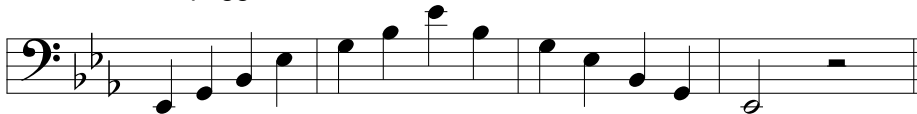
# Bassoon Key and Technique Studies

## Concert Eb

### Major Scale



### Arpeggio



### Thirds--Lower



### Thirds--Upper



### Clarke--Lower



### Clarke--Upper





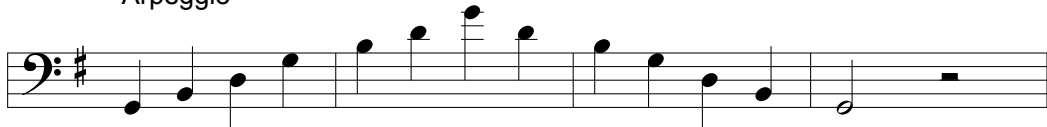
# Bassoon Key and Technique Studies

## Concert G

Major Scale



Arpeggio



Thirds--Lower



Thirds--Upper



Clarke--Lower

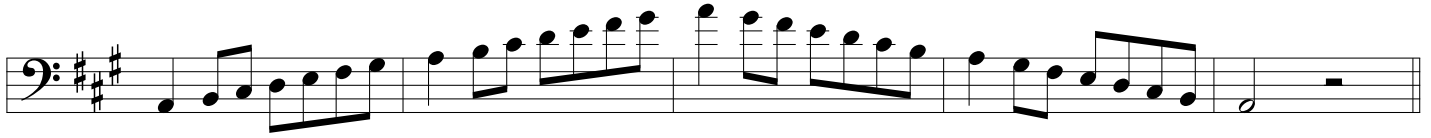


Clarke--Upper

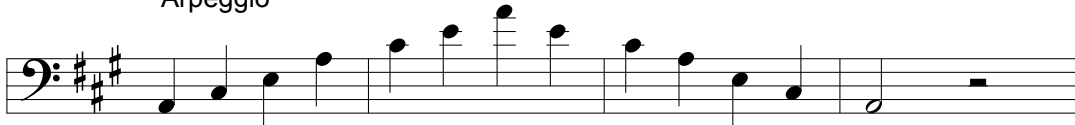


# Bassoon Key and Technique Studies Concert A

## Major Scale



## Arpeggio



## Thirds--Lower



## Thirds--Upper



## Clarke--Lower



## Clarke--Upper



# Bassoon Key and Technique Studies

## Concert Bb

Major Scale

A musical staff in bass clef with a Bb key signature. The exercise consists of an ascending major scale from G2 to G4, followed by a descending major scale from G4 to G2. The notes are marked with slurs and accents to indicate phrasing and articulation.

Arpeggio

A musical staff in bass clef with a Bb key signature. The exercise consists of a series of arpeggiated chords, starting with a G2 octave and moving up stepwise to G4, then descending back to G2. Each chord is marked with an accent.

Thirds--Lower

A musical staff in bass clef with a Bb key signature. The exercise consists of a series of descending eighth-note pairs, starting from G4 and moving down to G2. Each pair is marked with an accent.

Thirds--Upper

A musical staff in bass clef with a Bb key signature. The exercise consists of a series of ascending eighth-note pairs, starting from G2 and moving up to G4. Each pair is marked with an accent.

Clarke--Lower

A musical staff in bass clef with a Bb key signature. The exercise consists of a series of descending eighth-note pairs, starting from G4 and moving down to G2. Each pair is marked with an accent.

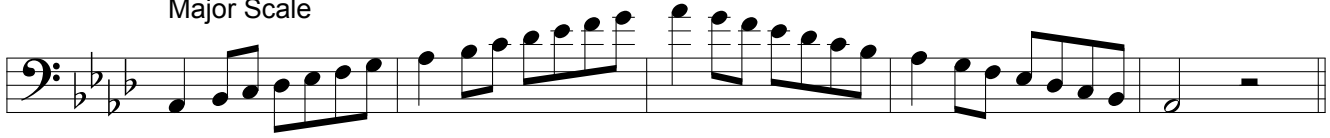
Clarke--Upper

A musical staff in bass clef with a Bb key signature. The exercise consists of a series of ascending eighth-note pairs, starting from G2 and moving up to G4. Each pair is marked with an accent.

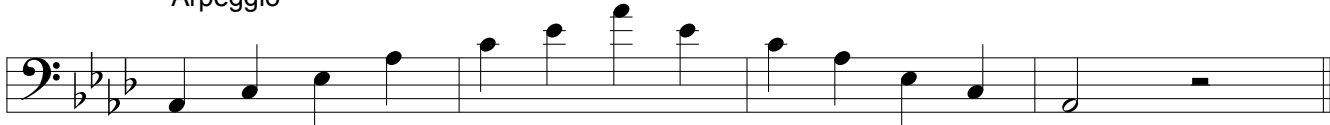
# Bassoon Key and Technique Studies

## Concert Ab

Major Scale



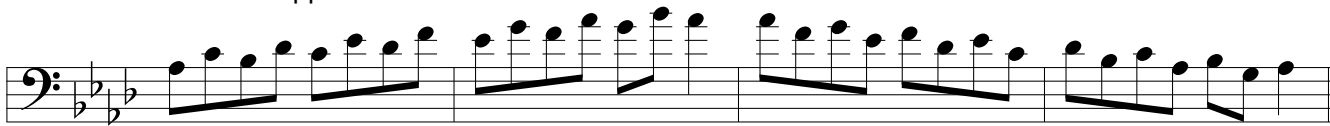
Arpeggio



Thirds--Lower



Thirds--Upper



Clarke--Lower



Clarke--Upper



# Bassoon Key and Technique Studies

## Concert E

Major Scale



Arpeggio



Thirds--Lower



Thirds--Upper



Clarke--Lower



Clarke--Upper



# Bassoon Key and Technique Studies

## Concert B

Major Scale



Arpeggio



Thirds--Lower



Thirds--Upper



Clarke--Lower



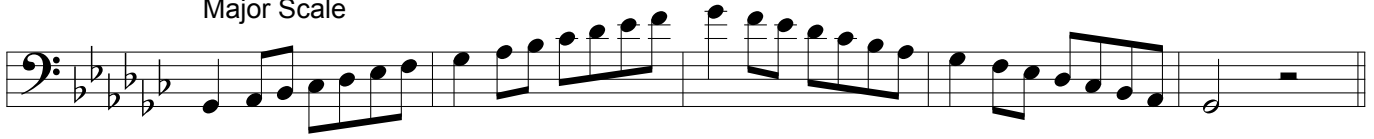
Clarke--Upper



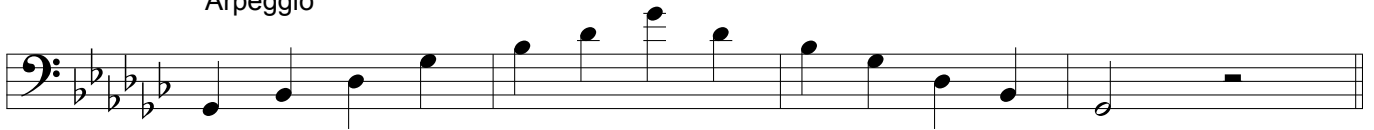
# Bassoon Key and Technique Studies

## Concert Gb

Major Scale



Arpeggio



Thirds--Lower



Thirds--Upper



Clarke--Lower



Clarke--Upper



# Bassoon Key and Technique Studies

## Concert Db

Major Scale



Arpeggio



Thirds--Lower



Thirds--Upper



Clarke--Lower



Clarke--Upper

