

# Oboe Key and Technique Studies

## Concert C

Major Scale

Musical notation for the Major Scale exercise, consisting of an ascending and descending scale in treble clef.

Arpeggio

Musical notation for the Arpeggio exercise, showing a sequence of notes in treble clef.

Thirds--Lower

Musical notation for the Thirds--Lower exercise, featuring a sequence of notes in treble clef.

Thirds--Lower

Musical notation for the Thirds--Lower exercise, featuring a sequence of notes in treble clef.

Clarke--Lower

Musical notation for the Clarke--Lower exercise, featuring a sequence of notes in treble clef.

Clarke--Upper

Musical notation for the Clarke--Upper exercise, featuring a sequence of notes in treble clef.

# Oboe Key and Technique Studies Concert D

Major Scale

Musical notation for a Major Scale exercise in D major. The staff is in treble clef with a key signature of two sharps (F# and C#). The melody consists of a sequence of eighth notes: D4, E4, F#4, G4, A4, B4, C#5, D5, followed by a descending sequence: C#5, B4, A4, G4, F#4, E4, D4. The piece concludes with a whole rest on the D4 note.

Arpeggio

Musical notation for an Arpeggio exercise in D major. The staff is in treble clef with a key signature of two sharps (F# and C#). The melody consists of eighth notes: D4, E4, F#4, G4, A4, B4, C#5, D5, followed by a descending sequence: C#5, B4, A4, G4, F#4, E4, D4. The piece concludes with a whole rest on the D4 note.

Thirds--Lower

Musical notation for a Thirds--Lower exercise in D major. The staff is in treble clef with a key signature of two sharps (F# and C#). The melody consists of eighth notes: D4, E4, F#4, G4, A4, B4, C#5, D5, followed by a descending sequence: C#5, B4, A4, G4, F#4, E4, D4. The piece concludes with a whole rest on the D4 note.

Clarke--Upper

Musical notation for a Clarke--Upper exercise in D major. The staff is in treble clef with a key signature of two sharps (F# and C#). The melody consists of eighth notes: D4, E4, F#4, G4, A4, B4, C#5, D5, followed by a descending sequence: C#5, B4, A4, G4, F#4, E4, D4. The piece concludes with a whole rest on the D4 note.

Clarke--Lower

Musical notation for a Clarke--Lower exercise in D major. The staff is in treble clef with a key signature of two sharps (F# and C#). The melody consists of eighth notes: D4, E4, F#4, G4, A4, B4, C#5, D5, followed by a descending sequence: C#5, B4, A4, G4, F#4, E4, D4. The piece concludes with a whole rest on the D4 note.

Clarke--Upper

Musical notation for a Clarke--Upper exercise in D major. The staff is in treble clef with a key signature of two sharps (F# and C#). The melody consists of eighth notes: D4, E4, F#4, G4, A4, B4, C#5, D5, followed by a descending sequence: C#5, B4, A4, G4, F#4, E4, D4. The piece concludes with a whole rest on the D4 note.



# Oboe Key and Technique Studies

## Concert F

Major Scale

Musical notation for the Major Scale exercise in Concert F. The piece is in the key of F major (one flat) and 4/4 time. It consists of an 8-measure phrase: measures 1-4 are an ascending eighth-note scale, and measures 5-8 are a descending eighth-note scale. The final note is a whole note F.

Arpeggio

Musical notation for the Arpeggio exercise in Concert F. The piece is in the key of F major (one flat) and 4/4 time. It consists of an 8-measure phrase: measures 1-4 are an ascending eighth-note arpeggio, and measures 5-8 are a descending eighth-note arpeggio. The final note is a whole note F.

Thirds--Lower

Musical notation for the Thirds--Lower exercise in Concert F. The piece is in the key of F major (one flat) and 4/4 time. It consists of an 8-measure phrase: measures 1-4 are an ascending eighth-note line of thirds, and measures 5-8 are a descending eighth-note line of thirds. The final note is a whole note F.

Thirds--Upper

Musical notation for the Thirds--Upper exercise in Concert F. The piece is in the key of F major (one flat) and 4/4 time. It consists of an 8-measure phrase: measures 1-4 are an ascending eighth-note line of thirds, and measures 5-8 are a descending eighth-note line of thirds. The final note is a whole note F.

Clarke--Lower

Musical notation for the Clarke--Lower exercise in Concert F. The piece is in the key of F major (one flat) and 4/4 time. It consists of an 8-measure phrase: measures 1-4 are an ascending eighth-note line of sixteenth-note pairs, and measures 5-8 are a descending eighth-note line of sixteenth-note pairs. The final note is a whole note F.

Clarke--Upper

Musical notation for the Clarke--Upper exercise in Concert F. The piece is in the key of F major (one flat) and 4/4 time. It consists of an 8-measure phrase: measures 1-4 are an ascending eighth-note line of sixteenth-note pairs, and measures 5-8 are a descending eighth-note line of sixteenth-note pairs. The final note is a whole note F.

# Oboe Key and Technique Studies

## Concert G

Major Scale

Musical notation for the Major Scale exercise in G major. The scale is written in treble clef with a key signature of one sharp (F#). The exercise consists of eight measures: an ascending eighth-note scale, a descending eighth-note scale, a descending quarter-note scale, and a final whole note G.

Arpeggio

Musical notation for the Arpeggio exercise in G major. The exercise consists of eight measures: an ascending eighth-note arpeggio, a descending eighth-note arpeggio, a descending quarter-note arpeggio, and a final whole note G.

Thirds--Lower

Musical notation for the Thirds--Lower exercise in G major. The exercise consists of eight measures: an ascending eighth-note scale, a descending eighth-note scale, a descending quarter-note scale, and a final whole note G.

Thirds--Upper

Musical notation for the Thirds--Upper exercise in G major. The exercise consists of eight measures: an ascending eighth-note scale, a descending eighth-note scale, a descending quarter-note scale, and a final whole note G.

Clarke--Lower

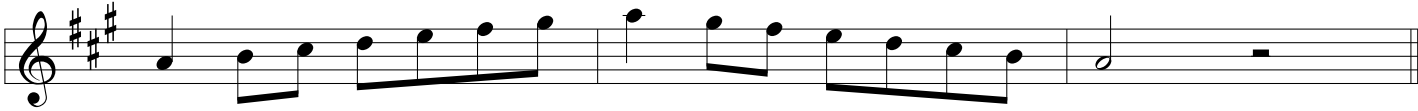
Musical notation for the Clarke--Lower exercise in G major. The exercise consists of eight measures: an ascending eighth-note scale, a descending eighth-note scale, a descending quarter-note scale, and a final whole note G.

Clarke--Upper

Musical notation for the Clarke--Upper exercise in G major. The exercise consists of eight measures: an ascending eighth-note scale, a descending eighth-note scale, a descending quarter-note scale, and a final whole note G.

# Oboe Key and Technique Studies Concert A

Major Scale



Arpeggio



Thirds--Lower



Thirds--Upper



Clarke--Lower



Clarke--Upper



# Oboe Key and Technique Studies

## Concert Bb

Major Scale

A musical staff in treble clef with a key signature of two flats (Bb major) and a 4/4 time signature. The exercise consists of an ascending scale from G4 to G5, followed by a descending scale from G5 to G4, and ends with a whole note G4.

Arpeggio

A musical staff in treble clef with a key signature of two flats (Bb major) and a 4/4 time signature. The exercise consists of an ascending arpeggio (G4, Bb4, D5) followed by a descending arpeggio (D5, Bb4, G4), and ends with a whole note G4.

Thirds--Lower

A musical staff in treble clef with a key signature of two flats (Bb major) and a 4/4 time signature. The exercise consists of ascending and descending pairs of thirds starting from G4, moving down to G3.

Thirds--Upper

A musical staff in treble clef with a key signature of two flats (Bb major) and a 4/4 time signature. The exercise consists of ascending and descending pairs of thirds starting from G4, moving up to G5.

Clarke--Lower

A musical staff in treble clef with a key signature of two flats (Bb major) and a 4/4 time signature. The exercise consists of ascending and descending pairs of sixteenth notes starting from G4, moving down to G3.

Clarke--Upper

A musical staff in treble clef with a key signature of two flats (Bb major) and a 4/4 time signature. The exercise consists of ascending and descending pairs of sixteenth notes starting from G4, moving up to G5.

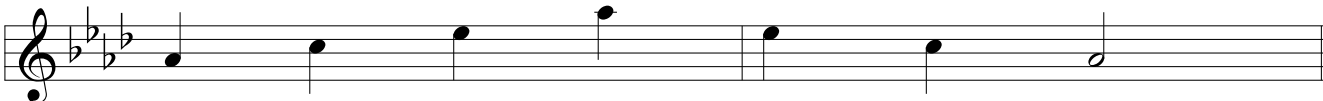
# Oboe Key and Technique Studies

## Concert Ab

Major Scale



Arpeggio



Thirds--Lower



Thirds--Upper



Clarke--Lower



Clarke--Upper



# Oboe Key and Technique Studies

## Concert E

Major Scale

Musical notation for the Major Scale in Concert E major (three sharps: F#, C#, G#). The scale is written in treble clef with a 4/4 time signature. It consists of eight measures: an ascending eighth-note scale, a descending eighth-note scale, a descending quarter-note scale, and a final whole note E.

Arpeggio

Musical notation for the Arpeggio in Concert E major. It is written in treble clef with a 4/4 time signature. The arpeggio is played in eighth notes across eight measures, starting on E and ending on E.

Thirds--Lower

Musical notation for Thirds--Lower in Concert E major. It is written in treble clef with a 4/4 time signature. The exercise consists of eighth-note triplets in eighth notes, alternating between ascending and descending patterns across eight measures.

Thirds--Upper

Musical notation for Thirds--Upper in Concert E major. It is written in treble clef with a 4/4 time signature. The exercise consists of eighth-note triplets in eighth notes, alternating between ascending and descending patterns across eight measures.

Clarke--Lower

Musical notation for Clarke--Lower in Concert E major. It is written in treble clef with a 4/4 time signature. The exercise consists of eighth-note pairs in eighth notes, alternating between ascending and descending patterns across eight measures.

Clarke--Upper

Musical notation for Clarke--Upper in Concert E major. It is written in treble clef with a 4/4 time signature. The exercise consists of eighth-note pairs in eighth notes, alternating between ascending and descending patterns across eight measures.

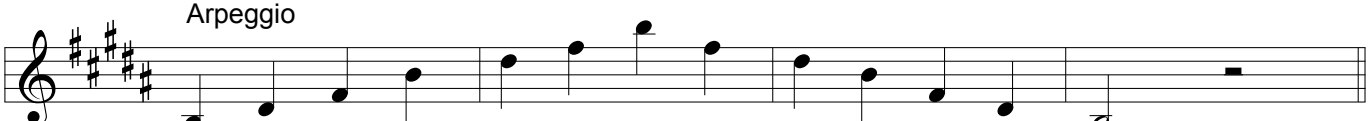
# Oboe Key and Technique Studies

## Concert B

Major Scale




Arpeggio



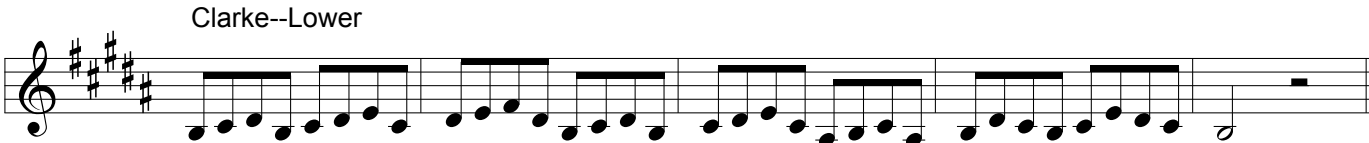
Thirds--Lower



Thirds--Upper



Clarke--Lower



Clarke--Upper



# Oboe Key and Technique Studies

## Concert Gb

Major Scale

Musical notation for the Major Scale in Concert Gb. The key signature has five flats (Bb, Eb, Ab, Db, Gb). The scale is written in a single staff, starting on Gb and ascending to Gb an octave higher, then descending back to Gb. The notes are: Gb, Ab, Bb, Cb, Db, Eb, Fb, Gb, Ab, Bb, Cb, Db, Eb, Fb, Gb.

Arpeggio

Musical notation for the Arpeggio in Concert Gb. The key signature has five flats. The arpeggio is written in a single staff, starting on Gb and ascending to Gb an octave higher, then descending back to Gb. The notes are: Gb, Ab, Bb, Cb, Db, Eb, Fb, Gb.

Thirds--Lower

Musical notation for Thirds--Lower in Concert Gb. The key signature has five flats. The exercise is written in a single staff, starting on Gb and ascending to Gb an octave higher, then descending back to Gb. The notes are: Gb, Ab, Bb, Cb, Db, Eb, Fb, Gb, Ab, Bb, Cb, Db, Eb, Fb, Gb.

Thirds--Upper

Musical notation for Thirds--Upper in Concert Gb. The key signature has five flats. The exercise is written in a single staff, starting on Gb and ascending to Gb an octave higher, then descending back to Gb. The notes are: Gb, Ab, Bb, Cb, Db, Eb, Fb, Gb, Ab, Bb, Cb, Db, Eb, Fb, Gb.

Clarke--Lower

Musical notation for Clarke--Lower in Concert Gb. The key signature has five flats. The exercise is written in a single staff, starting on Gb and ascending to Gb an octave higher, then descending back to Gb. The notes are: Gb, Ab, Bb, Cb, Db, Eb, Fb, Gb, Ab, Bb, Cb, Db, Eb, Fb, Gb.

Clarke--Upper

Musical notation for Clarke--Upper in Concert Gb. The key signature has five flats. The exercise is written in a single staff, starting on Gb and ascending to Gb an octave higher, then descending back to Gb. The notes are: Gb, Ab, Bb, Cb, Db, Eb, Fb, Gb, Ab, Bb, Cb, Db, Eb, Fb, Gb.

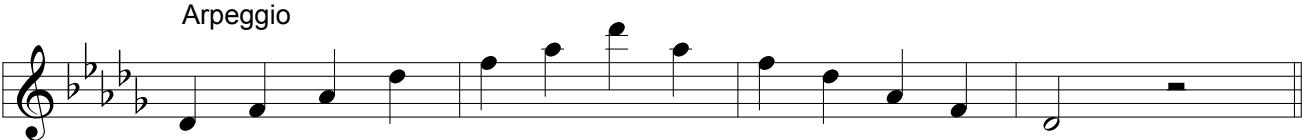
# Oboe Key and Technique Studies

## Concert Db

Major Scale



Arpeggio



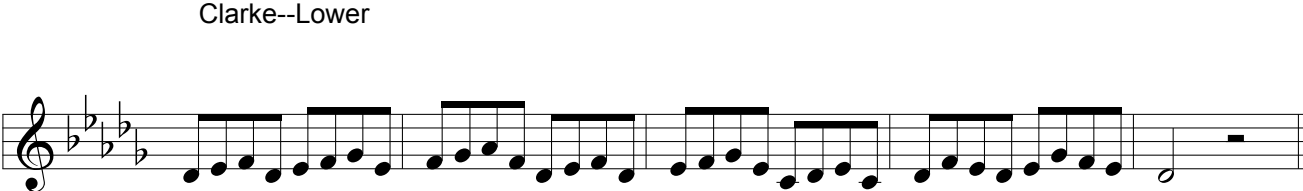
Thirds--Lower



Thirds--Upper



Clarke--Lower



Clarke--Upper

