

Tuba Key and Technique Studies

Concert C

Major Scale



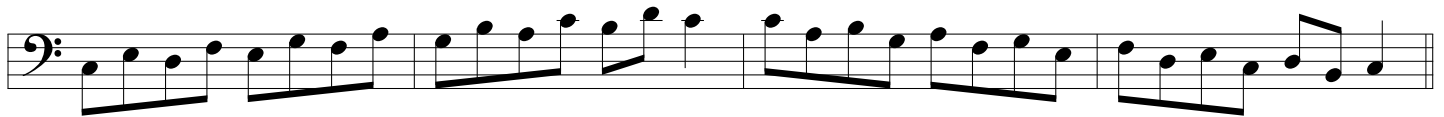
Arpeggio



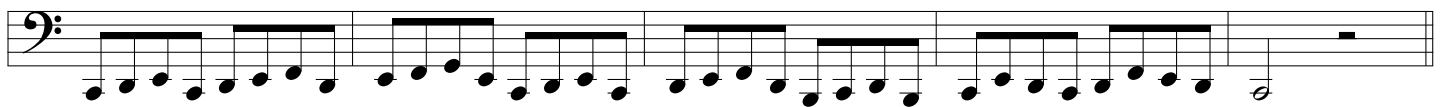
Thirds-Lower



Thirds--Upper



Clarke--Lower



Clarke-Upper



Tuba Key and Technique Studies

Concert D

Major Scale

Musical notation for the Major Scale in Concert D (D major), written in bass clef. The scale is presented in two directions: ascending and descending. The key signature has two sharps (F# and C#). The piece concludes with a whole rest on the final note, D.

Arpeggio

Musical notation for the Arpeggio in Concert D, written in bass clef. The arpeggio is played in ascending order, starting from the lowest note and moving up to the highest note, D. The piece concludes with a whole rest on the final note, D.

Thirds-Lower

Musical notation for Thirds-Lower in Concert D, written in bass clef. This exercise consists of four measures of eighth-note pairs, each pair forming a descending third. The piece concludes with a whole rest on the final note, D.

Thirds--Upper

Musical notation for Thirds--Upper in Concert D, written in bass clef. This exercise consists of four measures of eighth-note pairs, each pair forming an ascending third. The piece concludes with a whole rest on the final note, D.

Clarke--Lower

Musical notation for Clarke--Lower in Concert D, written in bass clef. This exercise consists of four measures of eighth-note pairs, each pair forming a descending second. The piece concludes with a whole rest on the final note, D.

Clarke-Upper

Musical notation for Clarke-Upper in Concert D, written in bass clef. This exercise consists of four measures of eighth-note pairs, each pair forming an ascending second. The piece concludes with a whole rest on the final note, D.

Tuba Key and Technique Studies

Concert Eb

Major Scale



Arpeggio



Thirds-Lower



Thirds--Upper



Clarke--Lower



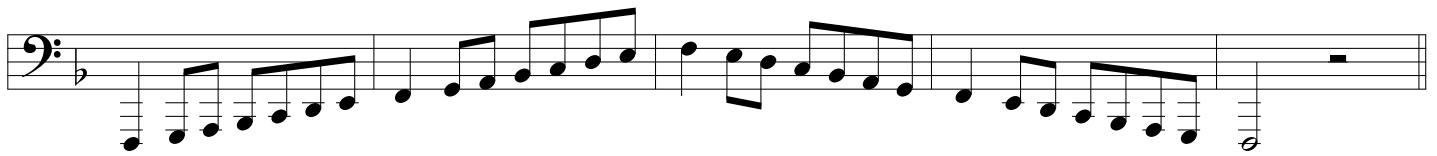
Clarke-Upper



Tuba Key and Technique Studies

Concert F

Major Scale



Arpeggio



Thirds-Lower



Thirds--Upper



Clarke--Lower



Clarke-Upper



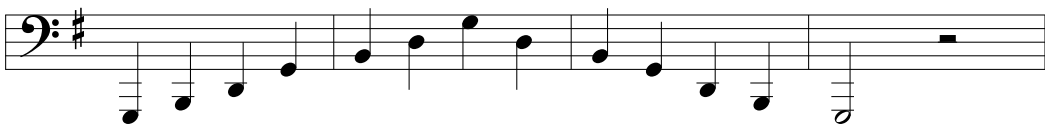
Tuba Key and Technique Studies

Concert G

Major Scale



Arpeggio



Thirds-Lower



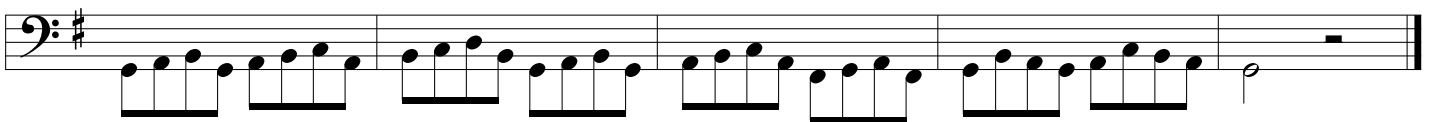
Thirds--Upper



Clarke--Lower

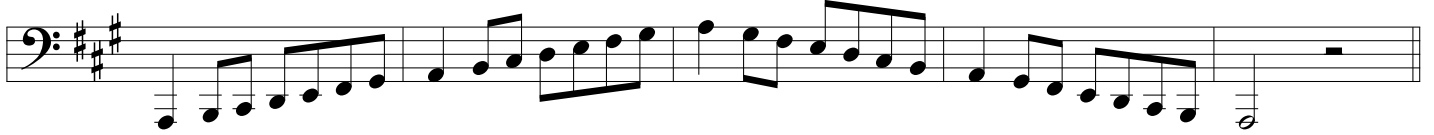


Clarke-Upper



Tuba Key and Technique Studies Concert A

Major Scale



Arpeggio



Thirds-Lower



Thirds--Upper



Clarke--Lower



Clarke-Upper



Tuba Key and Technique Studies

Concert Bb

Major Scale

Musical notation for the Major Scale in Concert Bb. The piece is written in bass clef with a key signature of two flats (Bb and Eb). It consists of two measures: the first measure contains an ascending eighth-note scale from G2 to G3, and the second measure contains a descending eighth-note scale from G3 to G2.

Arpeggio

Musical notation for the Arpeggio in Concert Bb. The piece is written in bass clef with a key signature of two flats. It consists of two measures: the first measure contains an ascending eighth-note arpeggio from G2 to G3, and the second measure contains a descending eighth-note arpeggio from G3 to G2.

Thirds-Lower

Musical notation for Thirds-Lower in Concert Bb. The piece is written in bass clef with a key signature of two flats. It consists of two measures: the first measure contains an ascending eighth-note line of thirds starting on G2, and the second measure contains a descending eighth-note line of thirds starting on G3.

Thirds--Upper

Musical notation for Thirds--Upper in Concert Bb. The piece is written in bass clef with a key signature of two flats. It consists of two measures: the first measure contains an ascending eighth-note line of thirds starting on G2, and the second measure contains a descending eighth-note line of thirds starting on G3.

Clarke--Lower

Musical notation for Clarke--Lower in Concert Bb. The piece is written in bass clef with a key signature of two flats. It consists of two measures: the first measure contains an ascending eighth-note line of sixths starting on G2, and the second measure contains a descending eighth-note line of sixths starting on G3.

Clarke-Upper

Musical notation for Clarke-Upper in Concert Bb. The piece is written in bass clef with a key signature of two flats. It consists of two measures: the first measure contains an ascending eighth-note line of sixths starting on G2, and the second measure contains a descending eighth-note line of sixths starting on G3.

Tuba Key and Technique Studies

Concert Ab

Major Scale

Musical notation for the Major Scale in Concert Ab, written in bass clef with a key signature of three flats (B-flat, E-flat, A-flat). The scale is presented in four measures: an ascending eighth-note scale, a descending eighth-note scale, a descending quarter-note scale, and a final whole note on the tonic (A-flat).

Arpeggio

Musical notation for the Arpeggio in Concert Ab, written in bass clef with a key signature of three flats. The arpeggio is presented in four measures: an ascending eighth-note arpeggio, a descending eighth-note arpeggio, a descending quarter-note arpeggio, and a final whole note on the tonic (A-flat).

Thirds--Lower

Musical notation for Thirds--Lower in Concert Ab, written in bass clef with a key signature of three flats. The exercise consists of four measures of eighth-note triplets, each containing a pair of notes separated by a minor third, moving in a descending sequence.

Thirds--Upper

Musical notation for Thirds--Upper in Concert Ab, written in bass clef with a key signature of three flats. The exercise consists of four measures of eighth-note triplets, each containing a pair of notes separated by a major third, moving in an ascending sequence.

Clarke--Lower

Musical notation for Clarke--Lower in Concert Ab, written in bass clef with a key signature of three flats. The exercise consists of four measures of eighth-note pairs, each containing a pair of notes separated by a minor third, moving in a descending sequence.

Clarke--Upper

Musical notation for Clarke--Upper in Concert Ab, written in bass clef with a key signature of three flats. The exercise consists of four measures of eighth-note pairs, each containing a pair of notes separated by a major third, moving in an ascending sequence.

Tuba Key and Technique Studies

Concert E

Major Scale

Musical notation for the Major Scale in Concert E, written in bass clef with a key signature of three sharps (F#, C#, G#). The scale is presented in a single line, starting on G2 and ascending to G3, with a final whole note G3.

Arpeggio

Musical notation for the Arpeggio in Concert E, written in bass clef with a key signature of three sharps (F#, C#, G#). The arpeggio is presented in a single line, starting on G2 and ascending to G3, with a final whole note G3.

Thirds--Lower

Musical notation for the Thirds--Lower exercise in Concert E, written in bass clef with a key signature of three sharps (F#, C#, G#). The exercise consists of a series of eighth notes, starting on G2 and ascending to G3, with a final whole note G3.

Thirds--Upper

Musical notation for the Thirds--Upper exercise in Concert E, written in bass clef with a key signature of three sharps (F#, C#, G#). The exercise consists of a series of eighth notes, starting on G2 and ascending to G3, with a final whole note G3.

Clarke--Lower

Musical notation for the Clarke--Lower exercise in Concert E, written in bass clef with a key signature of three sharps (F#, C#, G#). The exercise consists of a series of eighth notes, starting on G2 and ascending to G3, with a final whole note G3.

Clarke--Upper

Musical notation for the Clarke--Upper exercise in Concert E, written in bass clef with a key signature of three sharps (F#, C#, G#). The exercise consists of a series of eighth notes, starting on G2 and ascending to G3, with a final whole note G3.

Tuba Key and Technique Studies

Concert Cb

Major Scale



Arpeggio



Thirds--Lower



Thirds--Upper



Clarke--Lower



Clarke--Upper



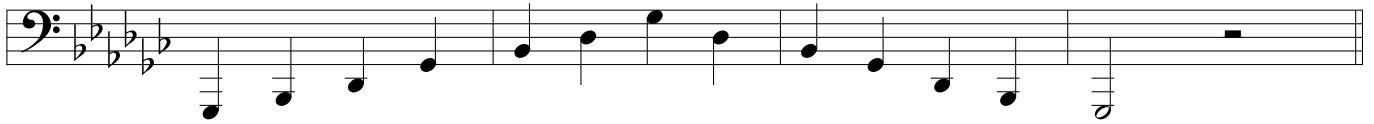
Tuba Key and Technique Studies

Concert Gb

Major Scale



Arpeggio



Thirds--Lower



Thirds--Upper



Clarke--Lower



Clarke--Upper



Tuba Key and Technique Studies

Concert Db

Major Scale

Musical notation for the Major Scale in Concert D-flat. The piece is written in bass clef with a key signature of three flats (B-flat, E-flat, A-flat) and a common time signature. The scale is presented in two lines: an ascending line and a descending line, both in eighth notes. The ascending line starts on the second space (D-flat) and ends on the second space (D-flat). The descending line starts on the second space (D-flat) and ends on the second space (D-flat).

Arpeggio

Musical notation for the Arpeggio in Concert D-flat. The piece is written in bass clef with a key signature of three flats and a common time signature. The arpeggio is presented in two lines: an ascending line and a descending line, both in eighth notes. The ascending line starts on the second space (D-flat) and ends on the second space (D-flat). The descending line starts on the second space (D-flat) and ends on the second space (D-flat).

Thirds--Lower

Musical notation for Thirds--Lower in Concert D-flat. The piece is written in bass clef with a key signature of three flats and a common time signature. The exercise consists of two lines of eighth-note pairs, each pair representing a third. The ascending line starts on the second space (D-flat) and ends on the second space (D-flat). The descending line starts on the second space (D-flat) and ends on the second space (D-flat).

Thirds--Upper

Musical notation for Thirds--Upper in Concert D-flat. The piece is written in bass clef with a key signature of three flats and a common time signature. The exercise consists of two lines of eighth-note pairs, each pair representing a third. The ascending line starts on the second space (D-flat) and ends on the second space (D-flat). The descending line starts on the second space (D-flat) and ends on the second space (D-flat).

Clarke--Lower

Musical notation for Clarke--Lower in Concert D-flat. The piece is written in bass clef with a key signature of three flats and a common time signature. The exercise consists of two lines of eighth-note pairs, each pair representing a third. The ascending line starts on the second space (D-flat) and ends on the second space (D-flat). The descending line starts on the second space (D-flat) and ends on the second space (D-flat).

Clarke--Upper

Musical notation for Clarke--Upper in Concert D-flat. The piece is written in bass clef with a key signature of three flats and a common time signature. The exercise consists of two lines of eighth-note pairs, each pair representing a third. The ascending line starts on the second space (D-flat) and ends on the second space (D-flat). The descending line starts on the second space (D-flat) and ends on the second space (D-flat).